

**CONTRACTOR TO VERIFY:**

(A) OVERALL LADDER HEIGHT

(B) F.F. TO TOP OF DECKING

(C) ROOF HATCH BASE HEIGHT

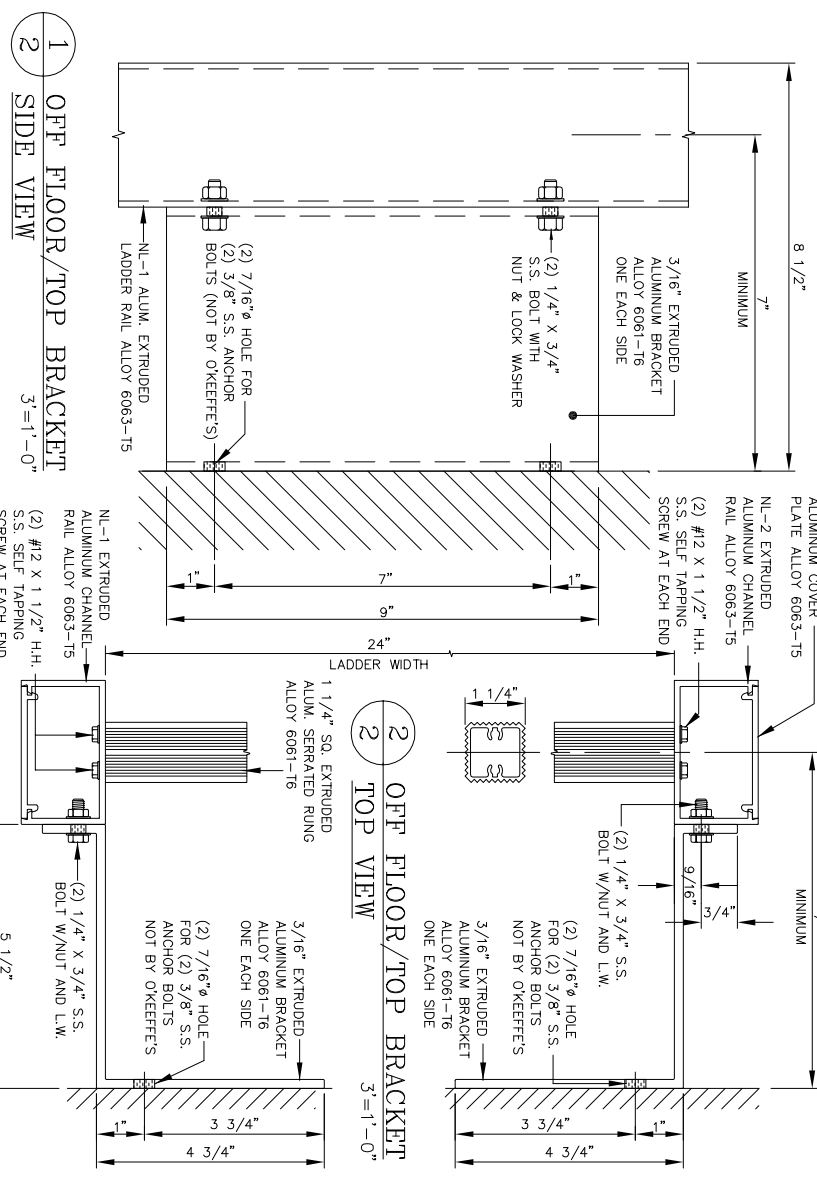
(D) WALL TO  $\phi$  OF LADDER

(E) LADDER WIDTH

APPROVED BY: \_\_\_\_\_

DATE: \_\_\_\_\_

PLEASE SIGN



**O'KEEFE'S, INC.**

100 N. HILL DR. SUITE 12  
BRISBANE, CA 94005-1010

TEL: (415) 824-4900  
FAX: (415) 824-5900

**HEAVY DUTY TUBULAR RAIL ALUMINUM CAGE LADDER**  
LOW PARAPET ACCESS TO ROOF HATCH W/RAIL EXTENSIONS MODEL 531

**SALE NO.**

QUANTITY \_\_\_\_\_

ALTERNATE BOTTOM SUPPORT

SECURITY DOOR

MILL FINISH

BRONZE ANODIZED

INTERMEDIATE BRACKET

POWDER COATING

CLEAR ANODIZED

SHEET : \_\_\_\_\_ OF \_\_\_\_\_