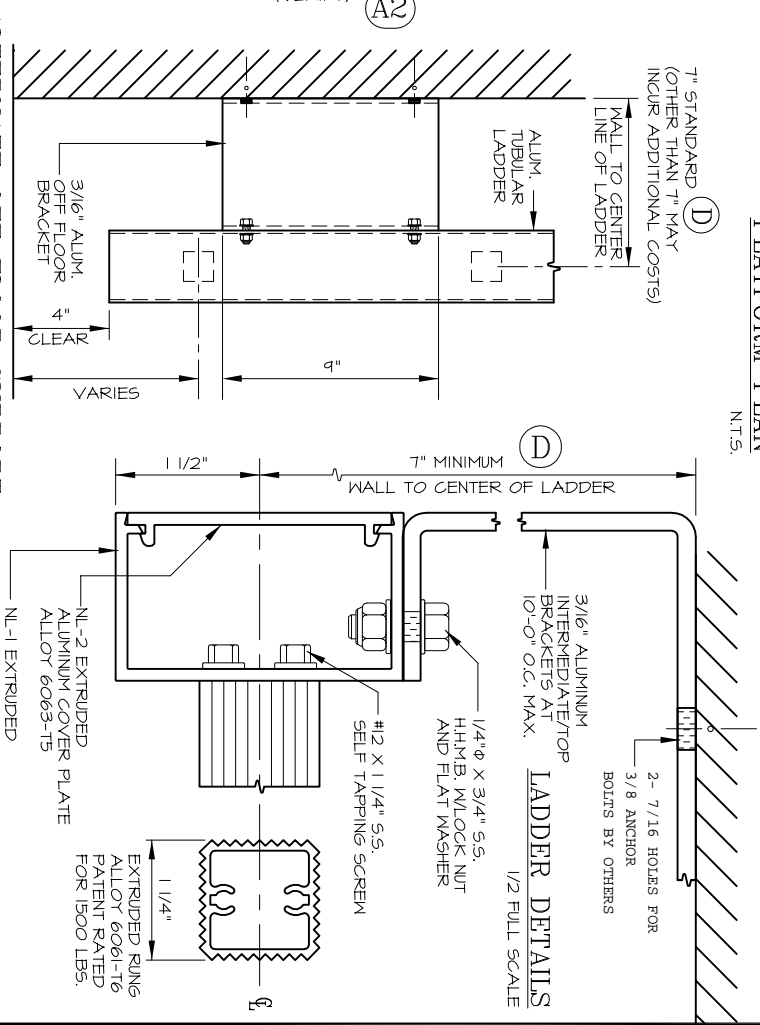


**CONTRACTOR TO VERIFY:**

(A1) OVERALL LADDER HEIGHT  
(A2) F.F. TO TOP OF PARAPET  
(B) ROOF TO TOP OF PARAPET  
(C) PARAPET WIDTH  
(D1) WALL TO  $\phi$  OF LADDER  
(D2) WALL TO  $\phi$  OF LADDER  
(E) LADDER WIDTH

APPROVED BY: \_\_\_\_\_  
DATE: \_\_\_\_\_



**TUBULAR RAIL HIGH PARAPET ACCESS LADDER**  
ALUMINUM LADDER WITH PLATFORM AND RETURN MODEL 503

- QUANTITY \_\_\_\_\_
- SECURITY DOOR
- INTERMEDIATE BRACKET
- ALTERNATE BOTTOM SUPPORT
- MILL FINISH
- POWDER COATING
- BRONZE ANODIZED
- CLEAR ANODIZED

**SALE NO.**

**DRAWN :**

**DATE :**

**SHEET :** \_\_\_\_\_ OF \_\_\_\_\_



**O'KEEFE'S, INC.**

100N HILL DR. STE 12  
BRISBANE, CA 94005  
TEL: (888) 653-3333  
FAX: (888) 653-4444  
www.okeefes.com